

GLUT1 Recombinant antibody

Cat: B07004R

Company: HaoKebio

Uniprot ID: P01275

Applications: IHC:1:5000-1:10000

Organism: Rabbit

IHC-Polymer:1:20000-1:40000

Species reactivity: Human Mouse Rat

IHC-TSA:1:25000-1:50000

IF:1:250-1:500

Background:

Glucagon is a protein cleaved from a precursor protein encoded by the GCG gene. The distinct peptides formed from this precursor include Glucagon, Glucagon-Like Peptide 1 (GLP-1), Glucagon-Like Peptide 2 (GLP-2), and oxyntomodulin. Glucagon is essential in maintaining blood glucose homeostasis and therefore has a key role in Type 1 and Type 2 diabetes.

Protein full name:

glucagon

Synonyms:

GCG, GLP 2, GLP1, GLP2, glucagon, GRPP, GRPP Oxyntomodulin, OXM, Proglucagon

Immunogen:

Recombinant protein

Isotype:

IgG

Subcellular location:

Membrane

Purity:

Affinity purification

Form:

Liquid

Storage Buffer:

PBS with 0.02% sodium azide, 100 µg/ml BSA and 50% glycerol.

Storage:

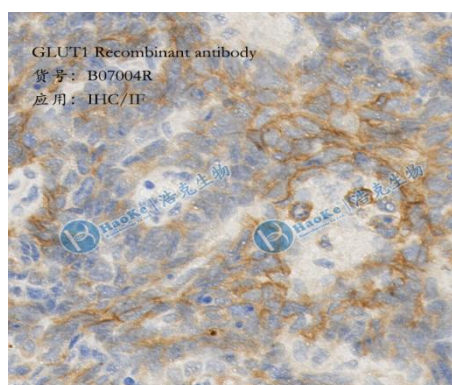
Store at -20 °C for one year.

Experimental procedure:

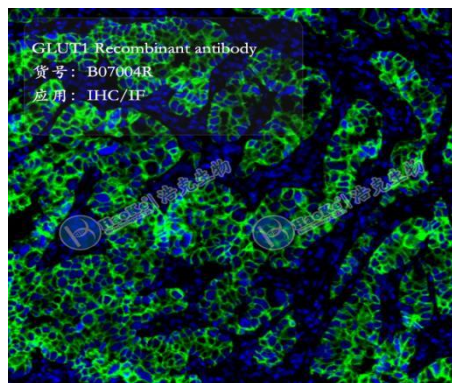
Antigen retrieval: Citrate buffer (pH 6.0), Medium high heat for 8 minutes, stop for 7 minutes, medium

high heat for 8 minutes. Incubate antibody, 4°C overnight. Secondary antibody: Poly-HRP Goat Anti-Rabbit & Mouse Universal Secondary Antibody, RT, 1h.

Images:



Sample: Mouse tumor, 4% PFA 12-24h



Sample: Mouse kidney, 4% PFA 12-24h

Source of Reagents:

发表[中文论文]请标注: GLUT1(B07004R)由杭州浩克生物技术有限公司提供;

发表[英文论文]请标注: GLUT1(B07004R) were kindly provided by Hangzhou Haoke Biotechnology Co., Ltd.