

## Cyclin D1 Recombinant antibody

**Cat:** B03030R

**Company:** HaoKebio

**Uniprot ID:** P24385

**Applications:** IHC:1:500-1:2000

**Organism:** Rabbit

IHC-Polymer:1:2000-1:8000

**Species reactivity:** Human Mouse Rat

IHC-TSA:1:12500-1:10000

IF:1:50-1:100

WB:1:5000-1:50000

### Background:

CCND1 (cyclin D1), also known as PRAD1 or BCL1, belongs to the highly conserved cyclin family, whose members are characterized by a dramatic periodicity in protein abundance throughout the cell cycle. CCND1 forms a complex with and functions as a regulatory subunit of CDK4 or CDK6, whose activity is required for cell cycle G1/S transition. The CCND1 gene, located on 11q13 has been reported to be overexpressed in mantle cell lymphoma (MCL) due to the chromosomal translocation. CCND1 has been shown to interact with tumor suppressor protein Rb and the expression of this gene is regulated positively by Rb. Over-expression of CCND1 is known to correlate with the early onset of cancer and risk of tumor progression and metastasis.

### Protein full name:

cyclin D1

### Synonyms:

CCND1, 6B10, B cell lymphoma 1 protein, B-cell lymphoma 1 protein, BCL-1

### Immunogen:

Recombinant protein

### Isotype:

IgG

### Subcellular location:

Nucleus

### Purity:

Affinity purification

### Form:

Liquid

### Storage Buffer:

PBS with 0.02% sodium azide, 100 µg/ml BSA and 50% glycerol.

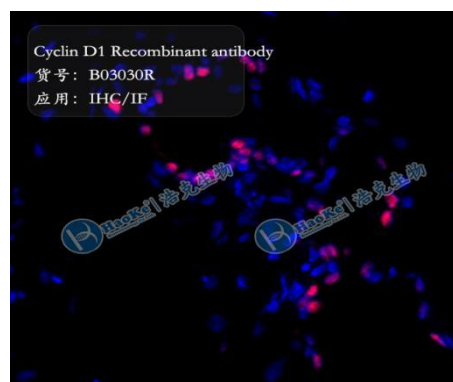
### Storage:

Store at -20 °C for one year.

### Experimental procedure:

Antigen retrieval: Citrate buffer (pH 6.0), Medium high heat for 8 minutes, stop for 7 minutes, medium high heat for 8 minutes. Incubate antibody, 4°C overnight. Secondary antibody: Poly-HRP Goat Anti-Rabbit & Mouse Universal Secondary Antibody, RT, 1h.

### Images:



Sample: Mouse blood vessel, 4% PFA 12-24h

### Source of Reagents:

发表[中文论文]请标注:Cyclin D1(B03030R)由杭州浩克生物技术有限公司提供;

发表[英文论文]请标注:Cyclin D1(B03030R) were kindly provided by Hangzhou Haoke Biotechnology Co., Ltd.

