

Caspase 3/P17/P19 Recombinant antibody

Cat: B03023R

Company: HaoKebio

Uniprot ID: P42574

Applications: IHC:1:200-1:1000

Organism: Rabbit

IHC-Polymer:1:800-1:4000

Species reactivity: Human Mouse Rat

IHC-TSA:1:1000-1:5000

IF:1:50

WB:1:500-1:1000

Background:

Caspases, a family of endoproteases, are critical players in cell regulatory networks controlling inflammation and cell death. Initiator caspases (caspase-2, -8, -9, -10, -11, and -12) cleave and activate downstream effector caspases (caspase-3, -6, and -7), which in turn execute apoptosis by cleaving targeted cellular proteins. Caspase 3 plays a key role in the activation of sterol regulatory element binding proteins (SREBPs) between the basic helix-loop-helix leucine zipper domain and the membrane attachment domain. Caspase 3 can form heterocomplex with other proteins. This antibody can recognize the cleaved Caspase 3 fragments. This antibody is specific for cleaved caspase 3, and does not recognize full length caspase-3. The cleaved fragment of Caspase 3 might form complex and shows at around 30-35 kDa by western blot.

Protein full name:

caspase 3, apoptosis-related cysteine peptidase

Synonyms:

CASP3, Caspase3, CASP 3, CASP-3, Caspase 3

Immunogen:

Recombinant protein

Isotype:

IgG

Subcellular location:

Cytoplasm

Purity:

Affinity purification

Form:

Liquid

Storage Buffer:

PBS with 0.02% sodium azide, 100 µg/ml BSA and 50% glycerol.

Storage:

Store at -20 °C for one year.

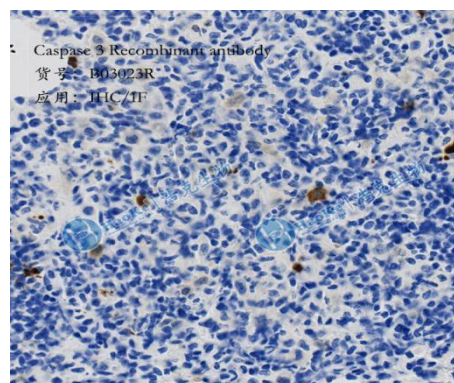
Experimental procedure:

Antigen retrieval: Citrate buffer (pH 6.0), Medium high heat for 8 minutes, stop for 7 minutes, medium high heat for 8 minutes. Incubate antibody, 4°C overnight. Secondary antibody: Poly-HRP Goat Anti-Rabbit & Mouse Universal Secondary Antibody, RT, 1h.

Images:



Sample: Mouse skin, 4% PFA 12-24h



Sample: Mouse lungs, 4% PFA 12-24h

Source of Reagents:

发表[中文论文]请标注:Caspase 3/P17/P19(B03
023R)由杭州浩克生物技术有限公司提供;

发表[英文论文]请标注:Caspase 3/P17/P19(B03
023R) were kindly provided by Hangzhou Haok
e Biotechnology Co., Ltd.