

BCL2 Recombinant antibody

Cat: B02005R

Company: HaoKebio

Uniprot ID: P10415

Applications: IHC:1:100-1:300

Organism: Rabbit

IHC-Polymer:1:400-1:1200

Species reactivity: Human Mouse

IHC-TSA:1:500-1:1500

Background:

Bcl-2 (B-cell lymphoma 2) is an outer mitochondrial membrane protein that via heterodimerization with BAX proteins controls apoptosis. Abnormalities of Bcl-2 activity can lead to cancer, autoimmune diseases, and schizophrenia.

Protein full name:

B-cell CLL/lymphoma 2

Synonyms:

BCL2, BCL-2

Immunogen:

Recombinant protein

Isotype:

IgG

Subcellular location:

Cytoplasm

Purity:

Affinity purification

Form:

Liquid

Storage Buffer:

PBS with 0.02% sodium azide, 100 µg/ml BSA and 50% glycerol.

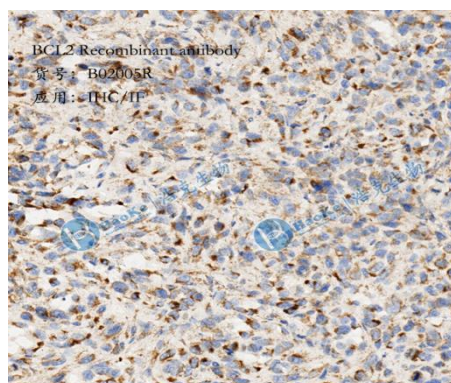
Storage:

Store at -20 °C for one year.

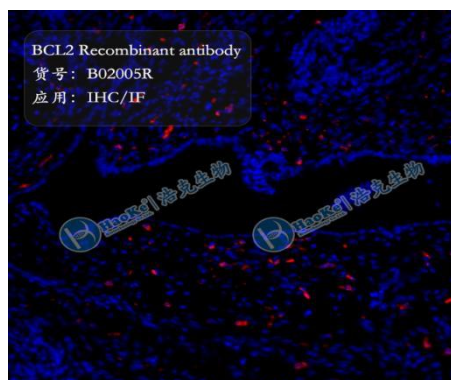
Experimental procedure:

Antigen retrieval: Citrate buffer (pH 6.0), Medium high heat for 8 minutes, stop for 7 minutes, medium high heat for 8 minutes. Incubate antibody, 4°C overnight. Secondary antibody: Poly-HRP Goat Anti-Rabbit & Mouse Universal Secondary Antibody, RT, 1h.

Images:



Sample: Mouse tumor, 4% PFA 12-24h



Sample: Mouse tumor, 4% PFA 12-24h

Source of Reagents:

发表[中文论文]请标注:BCL2(B02005R)由杭州浩克生物技术有限公司提供;

发表[英文论文]请标注:BCL2(B02005R) were kindly provided by Hangzhou Haoke Biotechnology Co., Ltd.